



GBM
贯博起重

Integration Manufacture for port solution, Since 1998



GBM in brief

SHANGHAI GUANBO MACHINERY EQUIPMENT CO., LTD. was founded in 1998. After years of development, it has been formed to develop products such as lifting machinery, port machinery. The two major business sectors are equipment manufacturing and general contracting of projects.

And we're happy nowadays gained precious agents and customer friends of different religion. We exported to more than 130 countries and regions such as the South America, Southeast Asia, Africa, Europe etc. We serve more than 500 shipowners, terminals and yards.. Now the brand value is 100 million.

GBM team of talent engineers with similar interests. We own strong R&D team comprised of engineers graduated from Germany with provable practical experience, we hire well-known experts as our technical consultants, own more than 20 authorized technical patents. We hope provide bespoke, value-adding solutions for different customers.

Our factory passed ISO9001 international quality management system, the product production process has advanced and perfect processing technology, from steel pretreatment, blanking, welding, to assembly, heat treatment, paint coating. The entire product production process has strict process requirements and quality standards to ensure product production. All aspects of the process meet the process requirements and high quality standards.



Team development



John Fang(Chairman)

A history of Innovation

- 1998 Develop 1st Diesel remote control grab in China
- 2005 Develop 1st Super Eco Hopper for environmental protection in China
- 2009 Become a core member of China Heavy Machinery Industry Association
- 2013 Develop Multifunctional harbour crane to save 1/3 cost for customer
- 2014 Develop 1st E-crane for Bangladesh cement factory
- 2015 Develop 1st Marine folding crane and enter offshore crane field
- 2016 Develop 1st containerized bagging machine
- 2017 In-depth cooperation with design institutes, provide contracting ship loader project in China
- 2019 Develop full electric container spreader to enter German market
- 2021 The first major order (EPC service) is received for Gambia customer



With the continuous growth of the company and the continuous enrichment of product lines, the number of our employees is also growing. In order to better serve our customers, GBM go from the front-end "technical Q&A" and "issue plan" of sales, to "quality inspection", "commissioning and installation" of production, "financial docking" and "shipping documents" of delivery, to the final "installation team" "After-sales department" of acceptance. All the departments set up are to serve customers more efficiently. Our team is constantly growing... Our history is just beginning.

Customer Testimonials



”

“We satisfied with GBM's services, they offer customized solution for our terminal and response our request and changes in very short time. We are happy with the efficiency, also good quality for further operation. ”

Hutchison Ports LCT

Miriam Peralta

Asistente de Compras Internacionales

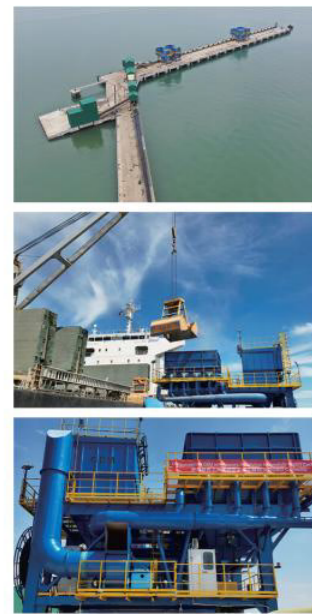
GBM is an Integrated Solution Provider in the Port & Cement & Steel Extended Industry, with its own core technology and a focus on innovation.

Efficiency is the decisive factor when unloading cargo at both seaports and harbours etc. Loading and unloading times have to be kept to a minimum.

GBM committed to the port of overall planning and "One-Stop Service" to meeting client's requirements. A range of optional equipment provides purpose-planned answers for all kinds of goods for the discharging and transport of bulk cargo terminals, from the design, supply and subsequent technical services with cost effective solutions at a short notice. Based on GBM's expertise and technical qualifications, we provides complete first one solutions for unloading is

**Solution 1:
Grab + Hopper+ Belt conveyor system**

Currently we are not only limited by equipment supply, but also extensive cooperation experience with Chinese design institute. We have provided EPC services to many famous oversea ports and cement plants.



CASE1

12CBM Remote grabs ,45CBM Eco-hoppers and Belt Conveyor System (EPC)
Cement Plant in Philippines

**We are committed to
Genius Design
Brilliant service
Modern factory**



Unloading Solution for you

Grab + Hopper+ Belt conveyor system from port to warehouse and silo



CASE2

Belt Conveyor System
Port Coal Handling System in Russia and Vietnam

CASE 3

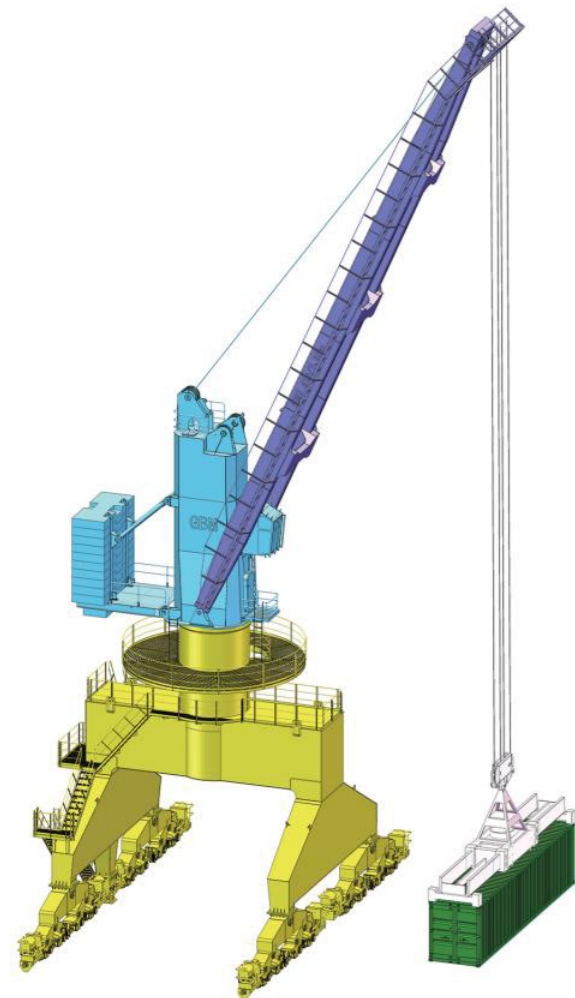
12CBM remote grabs,50CBM Double feeding Eco-hoppers and Warehouse (EPC)
Cement Plant in Cameroon and Gambia

**Solution 2:
Harbour crane + Various spreader**

Your choice has enormous repercussions for your port's productivity. This is why we have our golden rule: never compromise on quality & innovative technology on unique features.



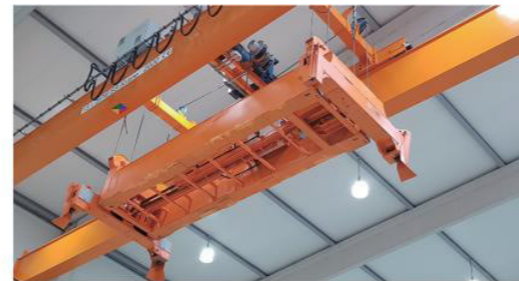
GBM supplied range of cranes, each with a variety of optional equipment provides purpose-planned answers for all kinds of containers, such as standard containers and overheight spreaders etc. GBM latest technologies and high quality standards guarantee maximum performance and equipment availability. Our spare parts department ensure the in-time spare parts supply for our core products, also is able to supply variable spare parts for other brand equipment promptly by integrating and classifying the middle and downstream supply chains.



Harbour crane

CASE 1

12 set electric telescopic spreaders
Over-head crane factory in Germany



CASE 2

2Set 20T@30M Harbour crane
In Bangladesh



01 I type fixed spreader
Operation: Manual, Mechanical, or Semi Automatic
ISO container sizes: 1x10', 1x20', 1x30', or 1x40'



02 Frame type fixed spreader
Operation: Manual, Mechanical, or Semi Automatic
ISO container sizes: 1x10', 1x20', 1x30', or 1x40'



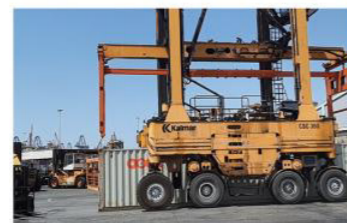
03 Hydraulic Automatic spreader
Optional: Hydraulic flipper; Rotary head; Translation function
ISO container telescopic: 20'-30'-40'-45'



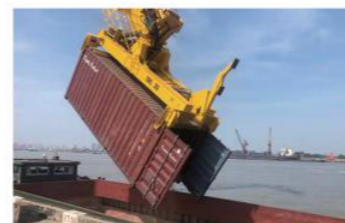
04 Electric Automatic spreader
ISO container telescopic: 20'-30'-40'-45'



05 Self-latching overheight frame
Operation: Semi-Automatic
ISO container sizes: 1x20', 1x30', 1x40' and 1x45'



06 Overheight frame
Operation: Automatic
ISO container sizes: 1x20', 1x30', 1x40' and 1x45'



07 The tilting spreader
The tilting angle: 45-65°. Unloading dry fertilisers from rail hoppers into specialised 20' containers is done on the spot



08 STRADDLE CARRIER



09 gravity centralizer
Lifting with 40t load; Keep balance



10 Flip spreader

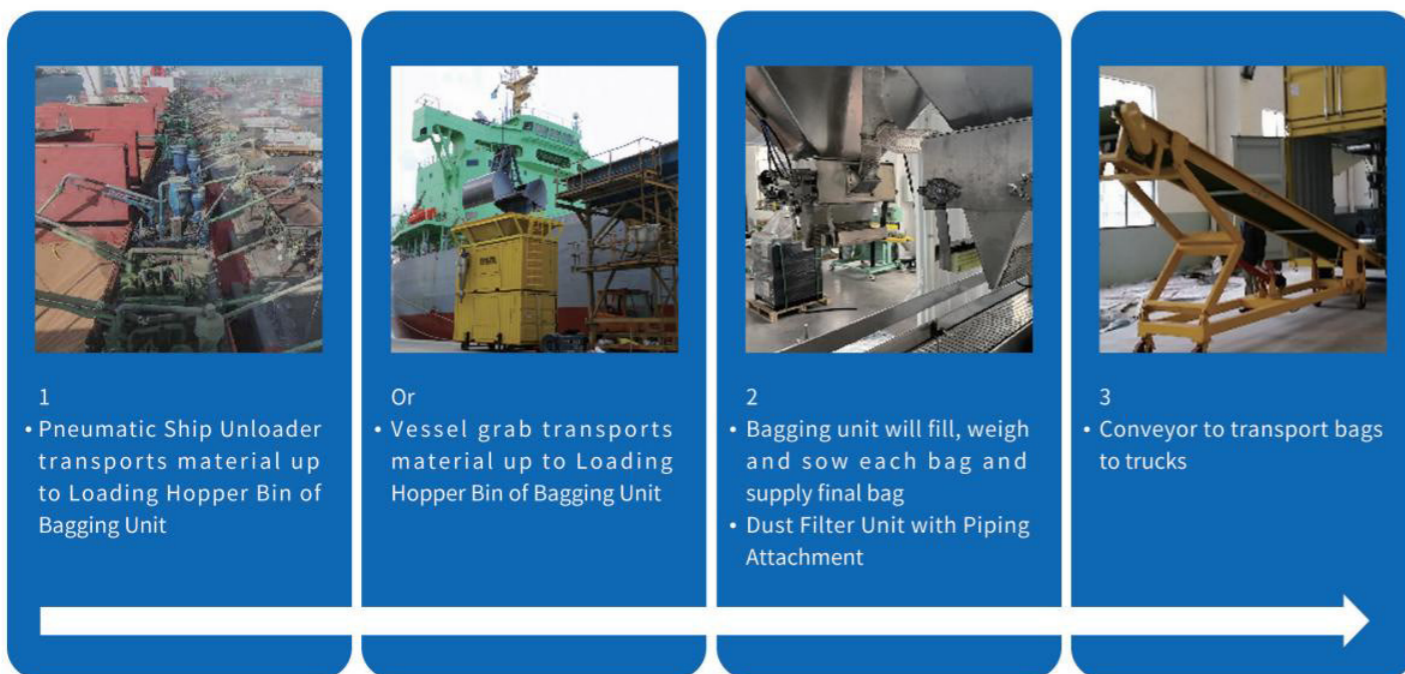


**Bagging Solution :
Ship unloader / Grab + Bagging Machine**

GBM developed the first mobile bagging machine in China within two ISO standard shipping containers, it is specially design for our customer needs, and It equipment with unrivalled and useful features. That will allowed commodities to be shipped in bulk and bagged at destination. Now serve an international clientele in over 30 countries. With the success of the first generation of remote grab + mobile bagging machines, then GBM supplied 10 wheat pneumatic ship unloaders for Karachi port, which not only highly environmental protection, but also maximizes the efficiency.

As a result, We has broadened bespoke equipment catalogue to do world' s most challenging work. Deeply understand the customer's packaging process, provide them with a turnkey project, constantly update new models, save customers time and economic costs, and give customers more options.

Process Flow



✧ Scope of supply



Develop New Series Model

Nowdays, the latest series port bagging machine developed by the GBM R&D team for the covid-19, has the following revolutionary advantages:

1. With the same work efficiency, the cost is reduced by 1/3, and make more cost-effective.
2. No need engineer to go abroad for installation, so the debugging can be completed in factory before delivery, and it can be put into use immediately after the customer receives machines.



CASE 1

5 set 6CBM Remote grabs ,4set bagging machines system with belt conveyor (EPC) TPA Port,Tanzania



CASE 2

100T/H Fixed dock Pneumatic Ship Unloader China port



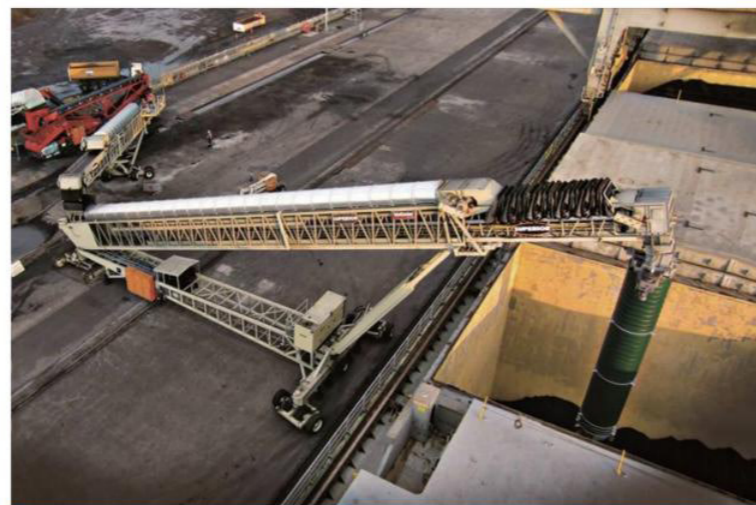
GBM provide you complete ship loader(ship loading system), barge loader(barge loading system), and vessel loader(vessel loading system). Our belt-feeding ship loading conveyor system is mainly designed for bulk materials loading in dockside. It can be applied to load a ship from trucks, reduce double handling of material from wheel loaders.

The mobile radial telescopic ship loader ensures unrivaled flexibility when loading a vessel. The radial and telescopic features allow the operator to easily trim the hatch or multiple hatches from one feeding position, reducing hatch change times and production downtime.

We offer a complete range of mobility and dust suppression / extraction options for specific applications and materials. Several environmentally friendly features are incorporated within the design. These include fugitive material reduction and collection systems, such as fully sealed transfer points and load zones, enclosed belting, drip pans, spray bars and dust-collection systems. The mobile conveyors are also quiet, compact.



Truck Unloader



Telestacker conveyor

What's advantage of mobile ship loader?

1. Lower Investment

- Significantly lower capital investment than highly-engineered, fixed systems. You just need a smaller budget now.

2. Less Engineering

- Faster lead times compared to fixed systems requiring excessive engineering. You can save a big work in engineering design.

3. Quick Installation

- Installation times measure in hours and days versus weeks or months. Just a few time, you can have a shiploader conveyor system.

4. Smaller Footprint

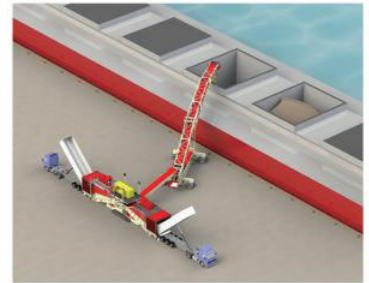
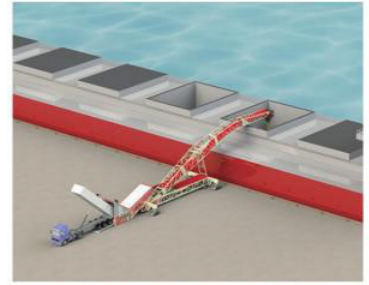
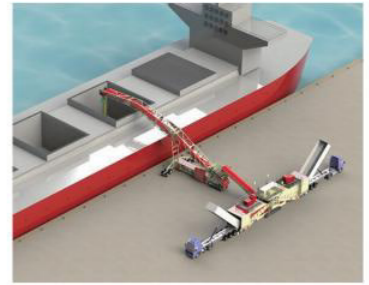
- Small footprint creates more dock space for other opportunities. You can make use of all the space of our port to generate profits

6. Powerful Function

- Multi-functional machinery performs loading, unloading and stockpiling tasks. You can use it to stack and load dry bulk materials.

5. High Mobility

- Highly mobile shiploaders can rapidly move in and out of your operation. You also can move it to other ports and in-land terminals.



CASE 1

NINGBO PORT 1500-2000T/H Truck Unloader



CASE 1

QINGDAO PORT 2500-3500T/H SHIP UNLOADER





THE
POWER
TO MOVE
MATERIALS